

# BreakOut

## System Manual

### **Risk warning**

Before you begin trading on Real account please carefully consider your investment goals, risk and experience you have. It should be noted that Forex is a leverage based market. It should be remembered that leverage can work both in your advantage and disadvantage as well. Therefore there is high risk of losing a part or all of your financial input placed on your account and because of that you should remember to trade with the amount of money which you can lose without taking any influential financial damage.

### **Disclaimer**

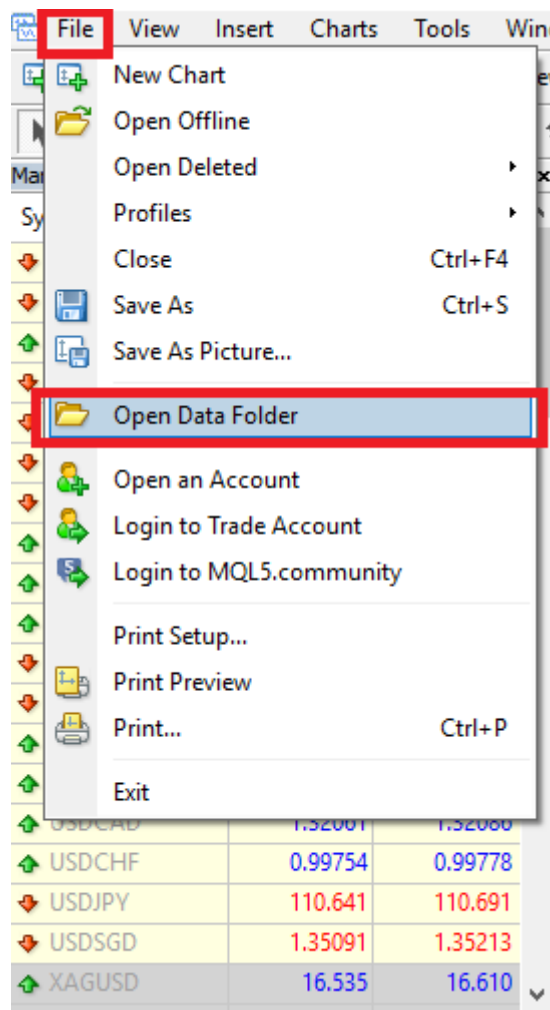
Signals generated by the system are not investment recommendations. All materials included on the website, as well as all system components (indicators, instruction manual) are for educational purposes only. Creators of the system will not take any responsibility for any profit or loss/damage caused by using the system.

### **Copyright © 2024 All rights reserved.**

Unless otherwise indicated, all materials on these pages are copyrighted by the fxvector.net. All rights reserved. No part of these pages, either text or image may be used for any purpose other than personal use. Therefore, reproduction, modification, in any form or by any means, electronic, or otherwise, for reasons other than personal use, is strictly prohibited without prior written permission.

# 1. Installation process.

- Open your MT4
- Click 'File/Open Data Folder' from the top tab.



- Copy indicator files to the 'MQL4>Indicators' folder.

Experts	08.05.2018 16:02
Files	08.05.2018 16:01
Images	08.05.2018 16:01
Include	08.05.2018 16:01
Indicators	15.06.2018 22:29
Libraries	08.05.2018 16:02
Logs	16.06.2018 09:40
Presets	08.05.2018 16:01
Projects	08.05.2018 16:01
Scripts	08.05.2018 16:02

- Copy template file to the 'Templates' folder.

config	15.06.2018 14:09
history	08.05.2018 16:03
logs	16.06.2018 09:40
MQL4	08.05.2018 16:01
profiles	13.06.2018 10:20
templates	15.06.2018 22:52
tester	13.06.2018 10:44
origin	08.05.2018 16:01

- Restart your MT4

# BREAKOUT

## HOW IT WORKS

Signals are very easy to read.

Every signals comes with alert!

BLUE ARROW = BUY SIGNAL

SELL ARROW = SELL SIGNAL



## Breakout

Entry and take profit levels.

Every signal provides entry and 2x take profit levels.

As stop loss we use opposite signal.

# Breakout

## Additional settings

Indicator provides a lot of settings that are easy to understand, so we will Focus on the most important ones.

‘Period’ – this number can be changed to receive different signal filtering.

The higher the number – the more filtered signals.

The lower the number – to more aggressive signals.

‘Take profit factor’ – the higher the number the more takeprofit you can expect.

The lower the number, the more ‘scalping’ take profit levels it provides (less pips, but more secure profit).

Custom Indicator - PipFinite Breakout EDGE\_fix

About Common Inputs Colors Visualization

Variable	Value
====> SETTINGS <=====	
Period	32
Range Filter	1.4
Stop Loss Mode	Opposite Signal
Take Profit Factor	2.0
Maximum History Bars	17000
====> MISC <=====	
Universal Draw Buffers	true
Universal Draw Objects	true
Universal Delete Objects	true
Universal Enable Alerts	true
====> DISPLAY <=====	
Show Signal	true
Show Entry Point	true
Show SR Lines	true
Show TP Targets	true
Show TP Hit Line	true
Show TP Tracking Line	true
Show SL Targets	true
Show SL Hit Line	true
Show SL Tracking Line	true

Load Save

OK Anuluj Reset